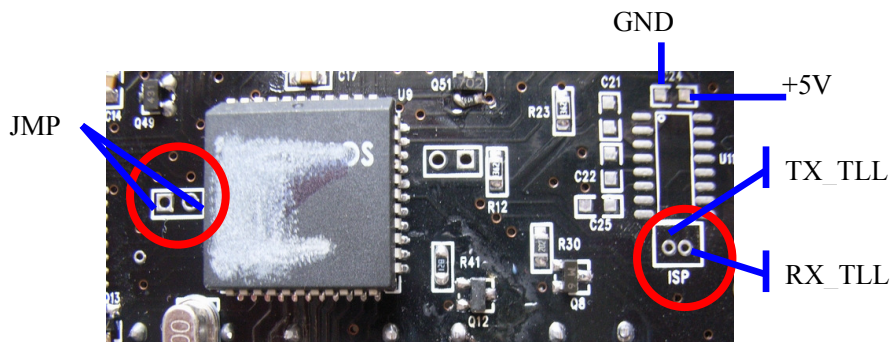


Steps of hardware upgrading:

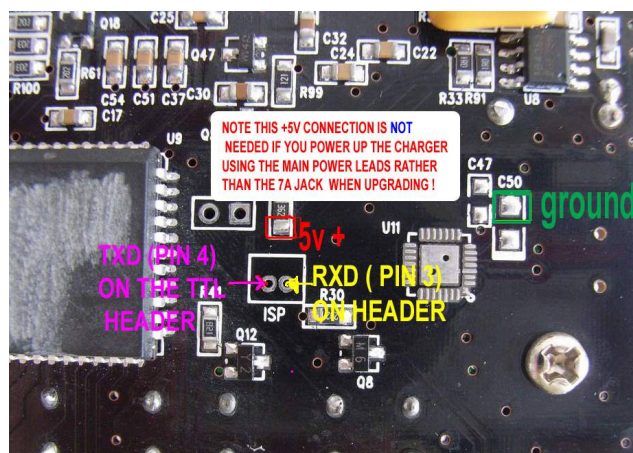
1, Prepare a **RS232/TTL converter**. You can refer to the following website:  
[http://www.tildesign.nl/content/downloads/rs232\\_ttl\\_converter\\_schematic\\_and\\_layout.pdf](http://www.tildesign.nl/content/downloads/rs232_ttl_converter_schematic_and_layout.pdf)

2, There is a 2Pin “ISP” socket on the PCB board of iCharger, which must be connected with the TX\_TTL port and RX\_TTL port of the converter, and also connected with the GND port at the same time.

3, First make a short circuit of the JMP ports with a conductor(*Note*: There is no need to do the short circuit of the JMP ports for version 3.02 and version higher than 3.02 ), then power on the board , and then cut off the short circuit. Then the iCharger enters into the waiting process of upgrading. (No display in LCD)

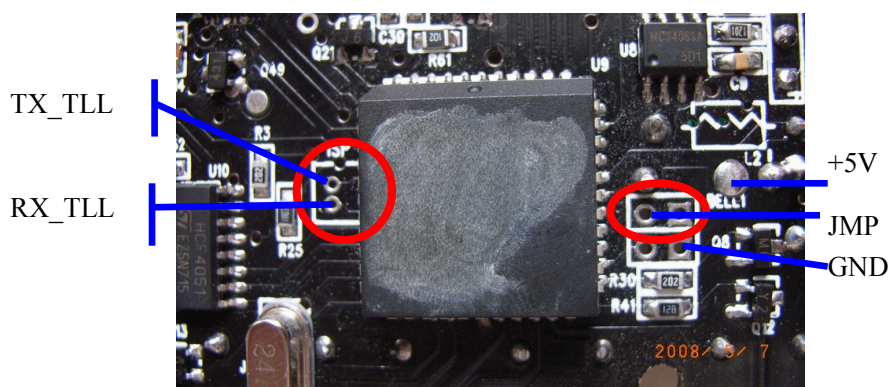


Old PCB of 1010B



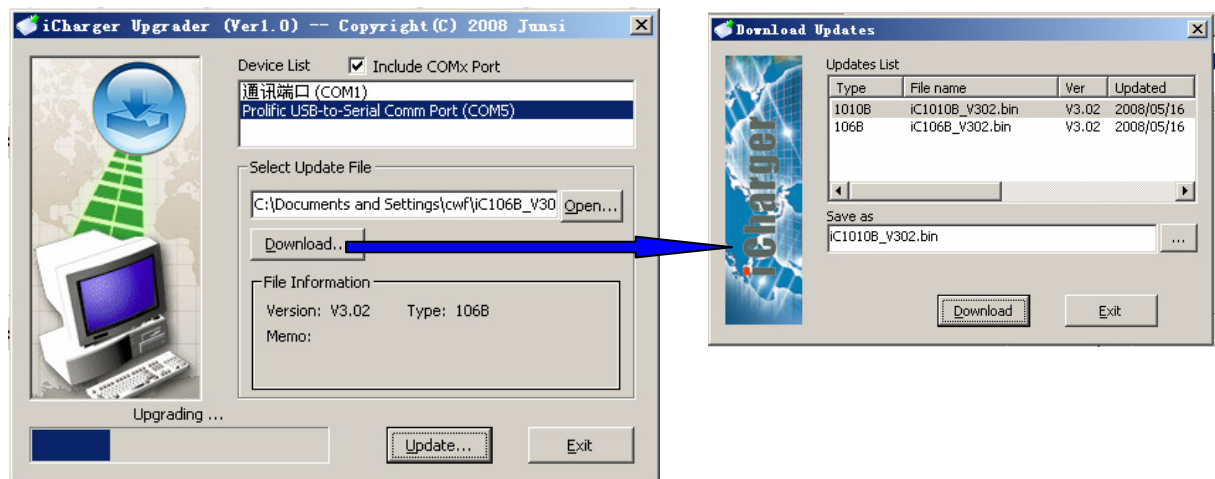
New PCB of 1010B

Originally posted by Julez



106B

4, Connect PC with the RS232/TTL, start the procedure of Upgrader.exe, choose the option COMx, then open the upgrading file (you can download), click the Update button..



Upgrader.exe software download: [http://www.jun-si.com/UploadFiles/Upgrader\\_v11.exe](http://www.jun-si.com/UploadFiles/Upgrader_v11.exe)

See “**Upgrading the iChargers for dummies**” by Julez on this website:  
<http://www.rcgroups.com/forums/showpost.php?p=10165401&postcount=1187>

**Note:** There are two kinds of PCB for 1010B, Old PCB for version lower than 3.02, new PCB for version higher than 3.02(including 3.02)

**Warn:** Any wrong operations will result in hardware locked, which can only be solved by the manufacturer.